

# Getting Started with DistriView Version 11



# Contents

|                  |   |           |
|------------------|---|-----------|
| <b>Section 1</b> | <b>Getting Started</b>                            | <b>3</b>  |
| 1.1              | A QUICK ROAD MAP .....                            | 3         |
| 1.2              | KEY TYPES .....                                   | 4         |
| 1.3              | SINGLE-USER ACCESS.....                           | 5         |
| 1.4              | NETWORK ACCESS .....                              | 6         |
| 1.5              | HARDWARE AND SOFTWARE REQUIREMENTS.....           | 7         |
| <br>             |   |           |
| <b>Section 2</b> | <b>Network Key Setup</b>                          | <b>9</b>  |
| 2.1              | INTRODUCTION .....                                | 9         |
| 2.2              | THE SENTINEL SECTOR METHOD .....                  | 9         |
|                  | Workstations Not Able to Access Network Key ..... | 10        |
| 2.3              | THE LEGACY HL-NET KEY .....                       | 12        |
|                  | Workstations Not Able to Access Network Key ..... | 13        |
| <br>             |   |           |
| <b>Section 3</b> | <b>Config. 2a and 3a</b>                          | <b>17</b> |
| 3.1              | INTRODUCTION .....                                | 17        |
| 3.2              | SETUP CONFIGURATIONS 2a AND 3a .....              | 17        |
| <br>             |   |           |
| <b>Section 4</b> | <b>Config. 2b and 3b</b>                          | <b>21</b> |
| 4.1              | INTRODUCTION .....                                | 21        |
| 4.2              | SETUP CONFIGURATIONS 2b AND 3b.....               | 22        |
| <br>             |   |           |
| <b>Section 5</b> | <b>Config. 2c and 3c</b>                          | <b>25</b> |
| 5.1              | INTRODUCTION .....                                | 25        |
| 5.2              | FILE SERVER SETUP .....                           | 26        |
| 5.3              | SETUP SHORTCUTS AT WORKSTATIONS .....             | 27        |
| <br>             |   |           |
| <b>Section 6</b> | <b>Program Uninstall</b>                          | <b>31</b> |
| 6.1              | UNINSTALL CONFIGS 2a, 2b, 3a AND 3b .....         | 31        |
| 6.2              | UNINSTALL CONFIGS 2c AND 3c .....                 | 31        |
| 6.3              | STOPPING THE LICENSE MANAGER .....                | 32        |



# Section 1

# Getting Started

---

## 1.1 A QUICK ROAD MAP

This document is designed to help new users of *ASPEN DistriView*<sup>TM</sup> install the software and get started using it.

As a new user, you should have received from ASPEN a *DistriView* program CD and one or more hardware keys. There are two types of hardware keys: single-user key and network key. The single-user key is green; the network key is red. (More information on the key types is available in Section 1.2 KEY TYPES.)

### IF YOU HAVE GREEN SINGLE-USER KEYS

1. Read Section 1.3 SINGLE-USER ACCESS to see the different ways of deploying the *DistriView* software in your organization using single-user keys. Select one of the three configurations: 2a, 2b or 2c.
2. See Section 3, 4 or 5, for configurations 2a, 2b and 2c, respectively, for detailed installation instructions.

### IF YOU HAVE A RED NETWORK KEY

1. Read Section 1.4 NETWORK ACCESS to see the different ways of deploying the *DistriView* software in your organization using a network key. Select one of the three configurations: 3a, 3b or 3c.
2. See Section 2 for instructions on how to setup the network key.
3. See Section 3, 4 or 5, for configurations 3a, 3b and 3c, respectively, for detailed installation instructions.

Please call or write ASPEN's tech support if you have questions or if you need any assistance:

|                                 |  |
|---------------------------------|--|
| Mailing address:                | ASPEN<br>49 N. San Mateo Drive<br>San Mateo, CA 94401 U.S.A. |
| Telephone:                      | (650)347-3997  |
| Fax:                            | (650)347-0233  |
| eMail in English:               | support@aspeninc.com   |
| eMail in Spanish or Portuguese: | suporte@aspeninc.com   |
| Web Site:                       | www.aspeninc.com   |

ASPEN's office hours are from 9:00 a.m. to 5:00 p.m. Pacific Time (GMT-8 in the winter, GMT-7 in the summer), Monday through Friday.

---

## 1.2 KEY TYPES

Since version 8, *DistriView* require a HASP HL key to run. The single-user HL key is green. The network HL key is red. The HL keys are backward compatible: They can be used for previous versions of *DistriView*.



**Figure 1:** HL-Max key (green) and HL-Net key (red) are required for version 8 and higher. The first and the third key from the left have the old form factor. The other two keys have the new form factor. These two groups of keys have identical functionality.

The key types in the picture below are no longer in use.



**Figure 2:** The long USB key and parallel-port keys are obsolete.

---

## 1.3 SINGLE-USER ACCESS

A key is for “single-user access” if it is physically connected to a PC, and the key is accessible only by programs running on that PC. The following will give you an overview on the different ways of setting up the program for single-user access.

Figure 2 shows three ways of deploying *DistriView* with single-user keys.

**Configuration 2a:** The program is installed on one or more workstations.

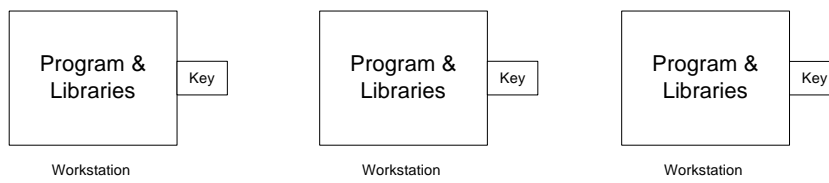
**Configuration 2b:** The program is installed on one or more workstations that are connected by a local area network (LAN). The libraries – i.e., relay, conductor and reliability class libraries that are referenced by *DistriView* – are copied to a file server for common access.

**Configuration 2c:** The program, as well as libraries referenced by the program, is installed once on the file server using the “file server setup” option within the regular setup program. At each workstation, a separate setup program, called “workstation setup”, is run to create shortcuts to the program files.

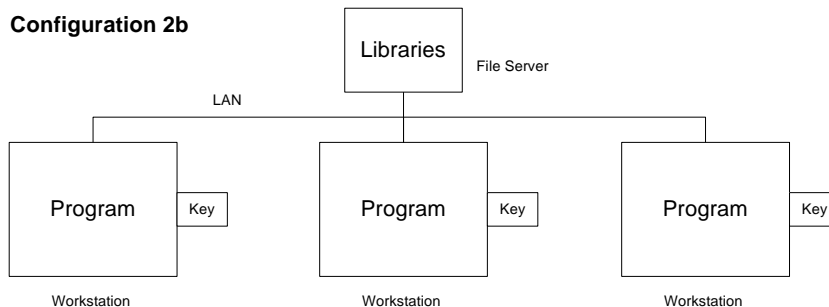
In all three configurations, a program key must be present on the workstation that is running the program.

We urge you to study these configurations and decide which to deploy. Please see Section 3, 4, and 5 for detailed installation instructions for configuration 2a, 2b and 2c, respectively.

**Configuration 2a**



**Configuration 2b**



**Configuration 2c**

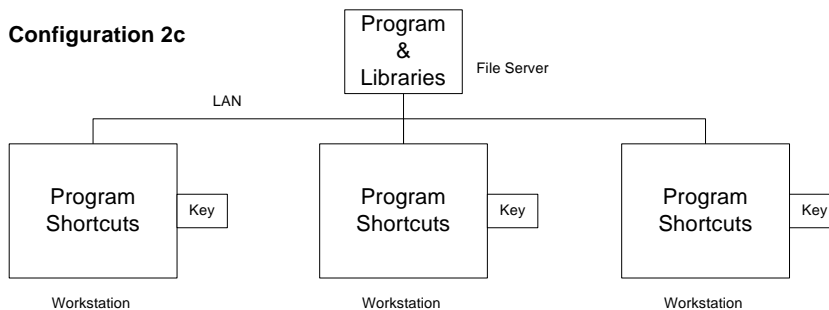


Figure 2: Different ways of deploying *DistriView* with single-user keys.

---

## 1.4 NETWORK ACCESS

A network key lets anyone on the network run the program as long as the total number of simultaneous users does not exceed the license limit (which is programmed into the key by ASPEN). The following will give you an overview on how to setup the program for network access. Figure 3 shows three ways of deploying *DistriView* with a network key.

**Configuration 3a:** The program is installed on one or more workstations that are connected by a local area network (LAN). There is no sharing of library files or program files among the workstations. This configuration is *not* recommended.

**Configuration 3b:** The program is installed on one or more workstations that are connected by a local area network (LAN). The libraries – i.e., the relay, conductor and reliability class libraries that are referenced by *DistriView* – are copied to a file server for common access.

**Configuration 3c:** The program, as well as the relay, conductor and reliability class libraries referenced by the program, are installed once on the file server using the regular setup program. At each workstation, a separate setup program, called “workstation setup”, is run to create shortcuts to the program files.

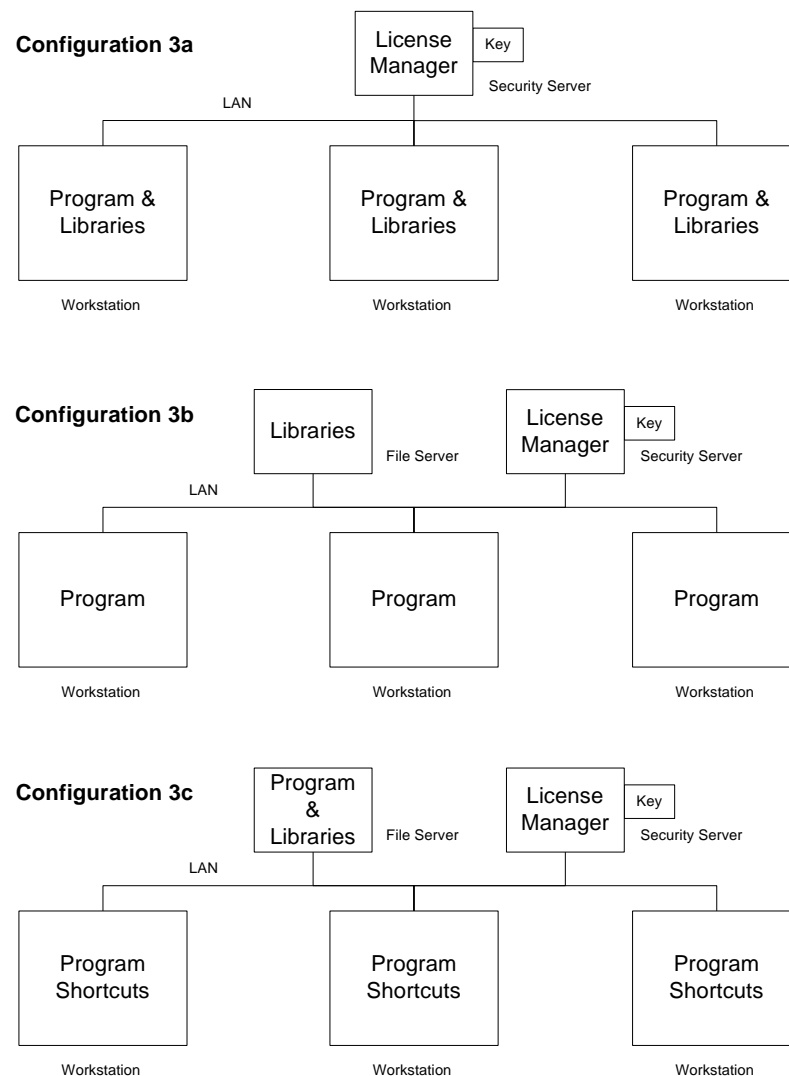


Figure 3: Different ways of deploying *DistriView* with a network key.



---

# 1.5 HARDWARE AND SOFTWARE REQUIREMENTS

## Hardware Requirements

*DistriView* runs on Pentium-based PCs and compatibles. Other hardware requirements include:

- A color monitor with 1024x768 resolution or better.
- Memory: 4 Gbytes is recommended.
- A full installation of the software requires approximately 100 Mbytes of disk space. You should allow some additional disk space for data files.
- A 2- or 3-button mouse.
- Any graphics-capable plotter, ink-jet or laser printer that works under Windows.

## Software Requirements

Microsoft Windows 10 or 11.

## Network-key computer Requirements (Network access configurations 3a, 3b and 3c)

- 32 and 64 bit Intel PCs and compatibles with an available USB port
- 32 or 64 bit Microsoft Windows, desktop or server version.



# Section 2      Network Key Setup

---

## 2.1 INTRODUCTION

You need to read this section if you have a red HL-Net key and have chosen configuration 3a, 3b or 3c for network access. Skip this section if you have a green HL key or you are planning to use your HL-Net key for local access only.

You must designate a PC on the network as the "network-key computer". The network-key computer can be any server or client PC on the LAN. The requirements for the network-key computer are the following:

- It has a USB port available for the HL-Net key.
- It is connected to the network.
- It is left on nearly all the time.
- It has a fixed IP address.

Prior to shipment, ASPEN has configured your network key in one of two ways:

1. **The Sentinel Sector Method:** The key is configured to work directly with the "Sentinel environment" without the need of a License Manager on the network-key computer.
2. **The Legacy Method:** The key is configured to work with a License Manager that runs in the background on the network-key computer.

The procedure to setup a Sentinel-Sector key is in Section 2.2.

The procedures to setup a key configured with the Legacy method is described in Section 2.3.

---

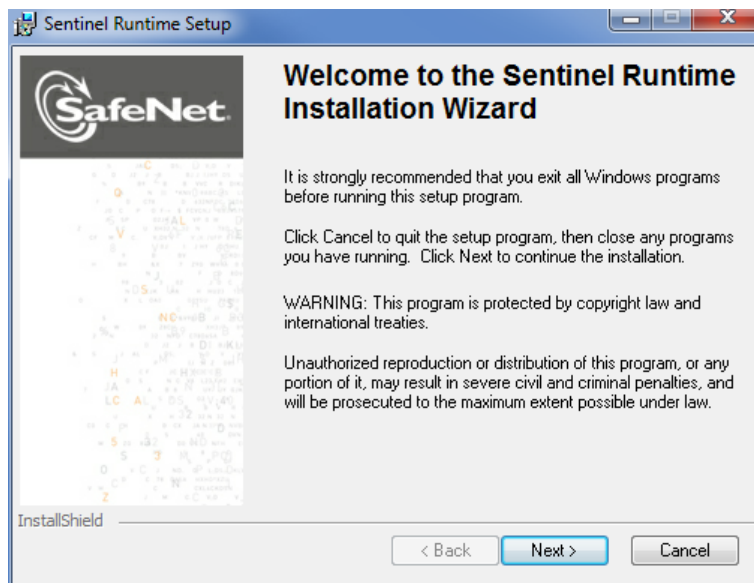
## 2.2 THE SENTINEL SECTOR METHOD

A hardware key configured for this method should have the letters "SS" printed on the key label, just above the serial number. Please contact ASPEN's tech support, [support@aspeninc.com](mailto:support@aspeninc.com), if you are installing a network key for the first time and your key does not have the "SS" printed on its label.

This method requires you to install the Sentinel Runtime software on the network-key computer, as follows.

1. **Do NOT connect the red key to the network-key computer, yet.**
2. **Log-in to the network-key computer with administrator privilege.**
3. **Insert the program CD in a drive d:.** Copy the program d:\NETWORK\HASPUUserSetup.exe, from the Program CD to a temporary directory on your hard disk.

4. **Execute HASPUserSetup.exe to create the “Sentinel environment”.** You will see this screen. **Press Next.**



It may take up to half a minute to complete this step.

5. **Plug in the red key.** The red LED inside the key should light up. There is no need to reboot the computer.

## Workstations Not Able to Access Network Key

**You need to read this sub-section only if a *DistriView* workstation complains about not being able to access the network key.**

The first thing you should do is to start the Configuration Program with **Start | All Programs | ASPEN DistriView | DistriView configuration** and check to see if the “Key type and method of access” option is set to “Local or network access to HL-Net key’s Sentinel Sector”. If not, change it and retry. Otherwise, read on.

By default, *DistriView* broadcasts a message over the network and listens for the key’s response each time the program starts up. This method sometimes fails when the workstation and the network-key computer are in different sub-nets. You can solve the problem by:

- Specify the IP address of the network-key computer at the workstation’s Sentinel environment, and
- Turn off the broadcast mechanism.

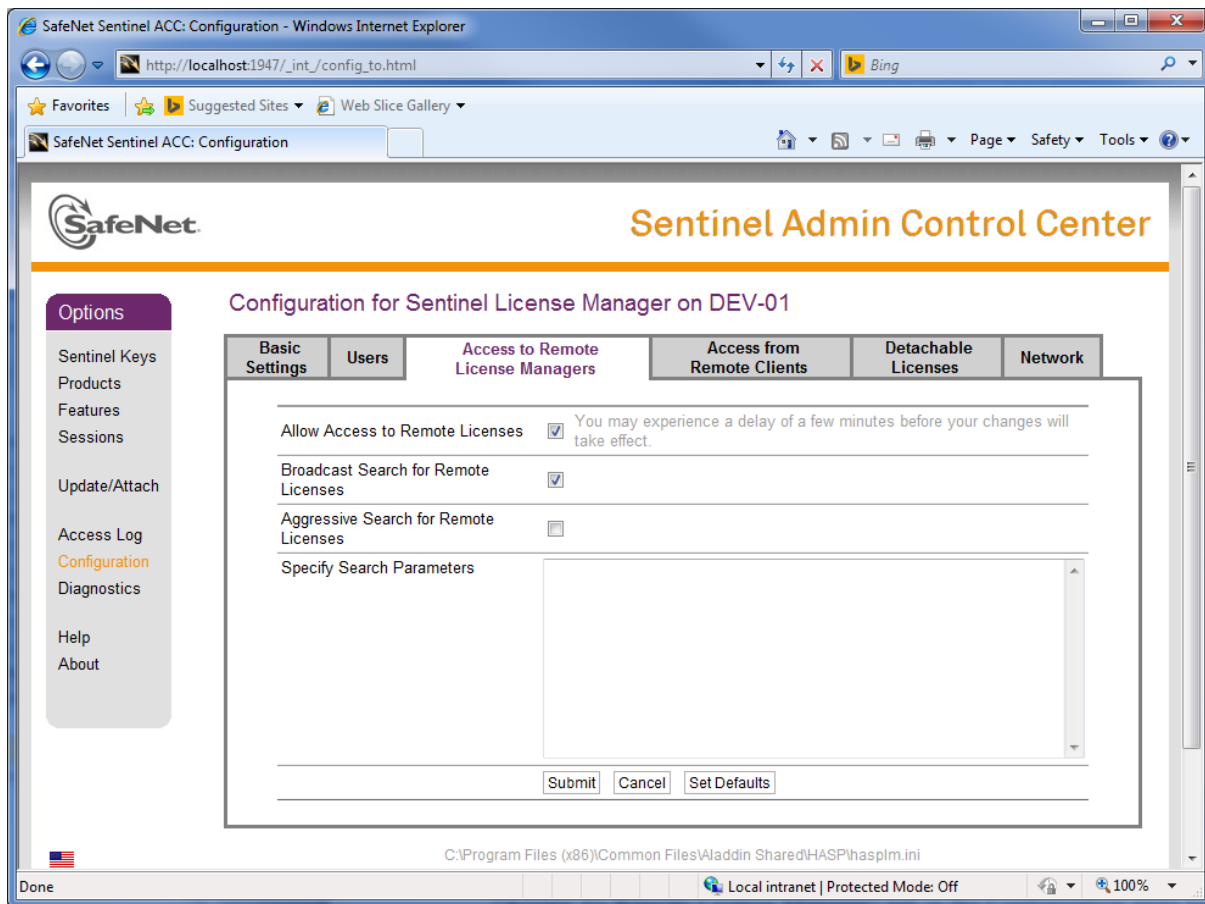
The Sentinel runtime interface is available at every workstation that has *DistriView* installed. You can bring up the runtime by entering the URL <http://localhost:1947> in your internet browser.

When the runtime interface opens, click on Sentinel Keys in the gray Options box on the left. Look at the list and see you can find a key with vendor ID of 42254 and key type of “HASP HL Net xx” (xx can be 10, 50 or infinite). By pressing the Net Features button on the right, the interface will show you the name of the programs that are authorized by the key.

At this time, you are unlikely to see the ASPEN HL-Net key in this list. (If the key were listed, then *DistriView* should have run.)

You can make adjustment in the key-search parameters, as follows.

First, click on Configuration in the gray Options panel on the left. The “Access to Remote License Manager” tab in the Configuration page will appear. It looks like this:

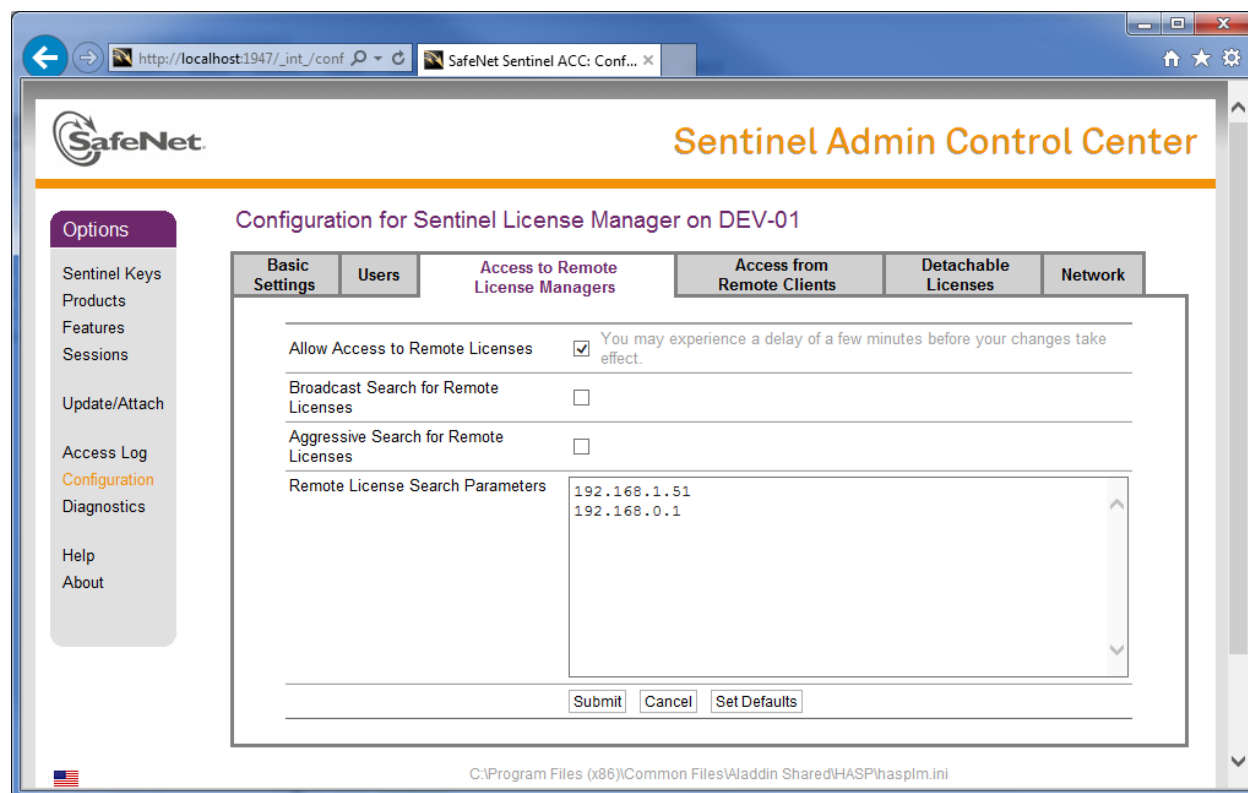


By default, the first two items, “Allow Access to Remote Licenses” and “Broadcast Search for Remote Licenses”, are checked.

Please do the following:

- Remove the check mark from “Broadcast Search for Remove Licenses”, and
- In the “Specify Search Parameters” box, enter the IP address of the network-key computer that is hosting the netwok key. Optional: Enter the IP address of the gateway. (See example screen below.)

After making these changes, the window should look like this.



Press the Submit button to put the new settings into effect.

After a few minutes, press the Sentinel Key button in the Options panel on the left and check to see if the Sentinel-Sector key is listed. If so, the problem is solved.

## 2.3 THE LEGACY HL-NET KEY

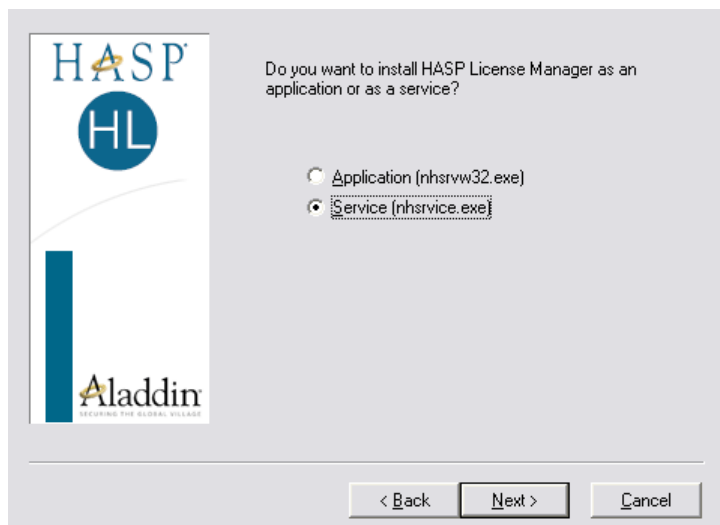
***DO NOT USE THIS METHOD UNLESS YOU ARE INSTRUCTED SPECIFICALLY BY ASPEN TO DO SO.***

The d:\NETWORK directory on the program CD contains the “License Manager” software. Once installed, the License Manager software runs as a background task (or “service”) on the network-key computer and handles all communication between the workstations and the program key. The communication between the workstations and the License Manager is transparent to the users.

Here are the instructions on installing the License Manager software on the network-key computer.

1. **Do NOT connect the red key to the network-key computer, yet.**
2. **Log-in to the network-key computer with administrator privilege.**
3. **Take a look to see if there are already one or more HASP keys plugged into the network-key computer. If so, check and see if there is already a service called “Hasp Loader” running. If so, then jump to step 7.**

4. **Insert the program CD in a drive d:. Copy the Win32 Server Setup Program, d:\NETWORK\LMSETUP.EXE, from the Program CD to a temporary directory on your hard disk.**
5. **Execute the program LMSETUP.EXE. When the Setup Type dialog box appears, select the option “Service (nhservice.exe)”. Follow other instructions in this setup program.**



6. **A message box will inform you that “The NetHASP LM requires the HASP Device Driver... Click YES to install Device Driver now.” Press YES.**
7. **When the installation process is completed plug the red network key onto a USB port of the network-key computer.**

*Note: If the LED inside the key does not turn on you must re-install the HASP by manually running the driver installation program HaspUserSetup.exe found in the CD's Network folder.*

The service installed by this program will continue running in the background even after you have log out of the local session.

**There is no need to reboot the computer.**

## Workstations Not Able to Access Network Key

**You need to read this sub-section only if a *DistriView* workstation complains about not being able to access the network key.**

The first thing you should check is whether the “Key type and method of access” at the workstation is set to “Network access to HASP HL-Net key”.

You can do this by starting the Configuration Program with **Start | All Programs | ASPEN DistriView | DistriView configuration** and check to see if the “Key type and method of access” option is set correctly. If not, change it and retry. Otherwise, read on.

By default, *DistriView* broadcasts a message over the network and listens for the key's response each time the program starts up. This method sometimes fails when the workstation and the network-key computer are in different sub-nets. You can solve the problem by modifying a text file called NETHASP.INI located in the same directory as the executable files dstview.exe to:

- Specify the IP address of the network-key computer , and
- Turn off the broadcast mechanism.

The content of the default NETHASP.INI is shown below. (Semicolons in columns 1 and 2 make the line a comment line.)

```
[NH_COMMON]
;; This NethASP.INI file is configured to TCPIP.
NH_TCPIP = Enabled;           ; Use the TCP/IP protocol

[NH_TCPIP]

;; -----
;; The default port number and the UDP-packet option work in nearly all
;; cases. Remove the comment characters (2 semicolons in columns 1 and 2)
;; and modify these parameters only if necessary.

;;NH_PORT_NUMBER = <Num>           ; Set the TCP/IP port number. This is
                                   ; optional. The default number is 475.

;;NH_TCPIP_METHOD = TCP or UDP      ; Send a TCP packet or UDP packet
                                   ; Default:  UDP

;; -----
;; Use the follow if the PC with the NethASP key has a fixed IP address.
;; Make sure you comment out (with two semicolons in columns 1 and 2)
;; the line above that reads "NH_USE_BROADCAST = Enabled" and remove
;; the two semicolons in columns 1 and 2 in the lines below.

;;NH_SERVER_ADDR = xx.xx.xx.xx;    ; IP addresses of all the NethASP
                                   ; License Managers you want to search.
                                   ; Unlimited addresses and multiple
                                   ; lines are possible.
                                   ;
                                   ; Possible address format examples:
                                   ; IP address:      192.114.176.65
                                   ; Local Hostname:  ftp.aladdin.co.il
;;NH_USE_BROADCAST = Disabled;    ; Do not use TCPI/IP Broadcast mechanism.
```

Please edit the ini file as follows.

1. **Look for a file called nethasp.ini, in the same directory as the executable file for DistriView. In most cases, this directory is c:\Program Files (x86)\ASPEN\dv\_v11.**

Double-click on the file nethasp.ini to edit it using Notepad.

***Note:** Because the file nethasp.ini resides in the Program Files directory. You must have Windows Administrative Privileges in order to edit this file.*

3. **Make the following changes to nethasp.ini.**

- a. Remove the two semicolons in columns 1 and 2 on the line that reads  
"NH\_SERVER\_ADDR = xx.xx.xx.xx".
- b. Replace the string xx.xx.xx.xx with the actual IP address of the network-key computer, e.g., 192.114.176.65.
- c. Remove the two semicolons in columns 1 and 2 on the line that reads  
"NH\_USE\_BROADCAST = Disabled".

Save the file on exit. The edited file should look like this (the edited lines are colored yellow):



```

[NH_COMMON]
;; This NethASP.INI file is configured to TCPIP.
NH_TCPIP = Enabled;                ; Use the TCP/IP protocol

[NH_TCPIP]

;; -----
;; The default port number and the UDP-packet option work in nearly all
;; cases. Remove the comment characters (2 semicolons in columns 1 and 2)
;; and modify these parameters only if necessary.

;;NH_PORT_NUMBER = <Num>           ; Set the TCP/IP port number. This is
                                   ; optional. The default number is 475.

;;NH_TCPIP_METHOD = TCP or UDP     ; Send a TCP packet or UDP packet
                                   ; Default:  UDP

;; -----
;; Use the follow if the PC with the NethASP key has a fixed IP address.
;; Make sure you comment out (with two semicolons in columns 1 and 2)
;; the line above that reads "NH_USE_BROADCAST = Enabled" and remove
;; the two semicolons in columns 1 and 2 in the lines below.

NH_SERVER_ADDR = 192.144.176.65;   ; IP addresses of all the NethASP
                                   ; License Managers you want to search.
                                   ; Unlimited addresses and multiple
                                   ; lines are possible.
                                   ;
                                   ; Possible address format examples:
                                   ; IP address:      192.114.176.65
                                   ; Local Hostname:  ftp.aladdin.co.il
NH_USE_BROADCAST = Disabled;       ; Do not use TCPI/IP Broadcast mechanism.

```

With this ini file, the network-key computer will communicate directly with the clients using the IP address you provide.



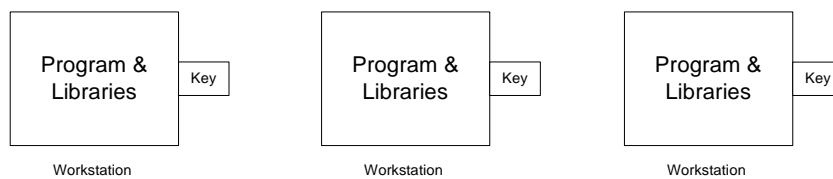
# Section 3                      Config. 2a and 3a

---

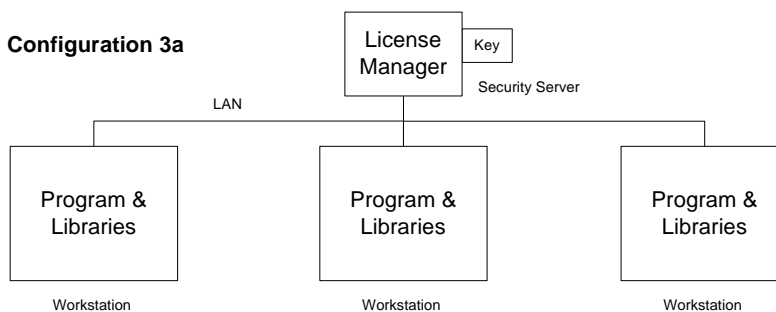
## 3.1 INTRODUCTION

This section will show you how to deploy the program in the two configurations shown below. Configuration 2a and 3a are similar. **In both configurations there is no sharing of the program files or the library files.** The only difference between the two configurations is that 2a utilizes single-user keys, and 3a utilizes a network key. The “Security Server” label for Configuration 3a refers to the “network-key computer” of Section 2.

**Configuration 2a**



**Configuration 3a**



---

## 3.2 SETUP CONFIGURATIONS 2a AND 3a

Here is how to install the program at each workstation:

1. **IMPORTANT:** For configuration 2a, do NOT plug in the key until you have completed the steps below.
2. **Insert the program CD into a CD drive.** We assume d: is your CD drive.

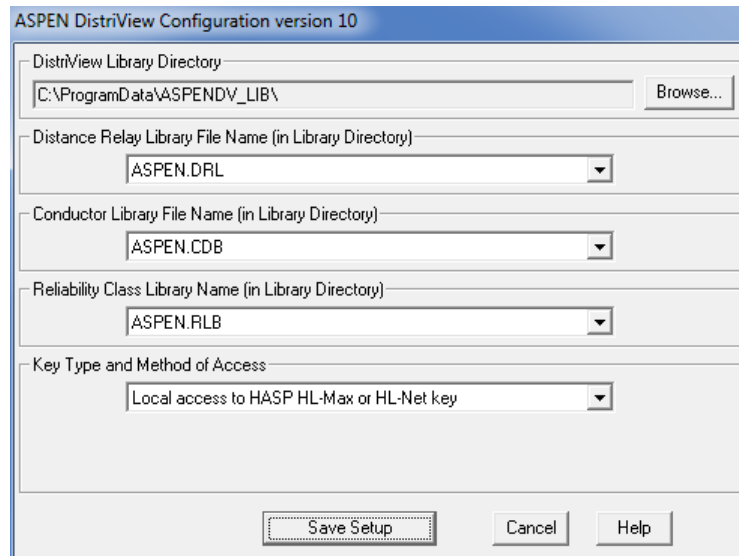
3. **Execute the program `d:\dv\setup`. Follow directions in the setup program to install the *DistriView* software on your local hard drive.**

*Note: The setup may launch installation dialog box for Microsoft Visual C++ redistributable run time if correct version of this component is not already found on the PC. Always select to install or repair to complete this step.*

4. ***DistriView* Configuration.**

The setup program will launch the *DistriView Configuration Program* near the end of the installation process.

*Note: The Cancel button is absent if you are installing DistriView v10 for the first time.*



The default Library Directory suggested by the configuration program varies depending on the operating system. In all cases, it is a directory on the local hard drive that is accessible to all the users who use this workstation.

**If needed, change the path names using the Browse button. The Browse dialog box also let you create new folders.**

**FOR CONFIGURATIONS 2a:**

**Select Local access to HASP HL-Max or HL-Net key under the “Key Type and Method of Access” dropdown list box.**

**FOR CONFIGURATIONS 3a:**

**Select Local or network access to HASP HL-Net key’s Sentinel Section under the “Key Type and Method of Access” dropdown list box for a Sentinel-Sector network key.**

**Select Network access to HASP HL-Net key under the “Key Type and Method of Access” dropdown list box for an legacy network key.**

**Press Save Setup.**

The configuration program will copy all the overcurrent curve library files (\*.rly), the distance relay library file `aspn.drl`, the conductor library file `aspn.cdb`, and the reliability class library file `aspn.rlb` from the program directory to the Library Directory.

If the Library Directory existed prior to this installation, the configuration program will *not* overwrite any custom .rly files or aspen.drl, aspen.cdb, or aspen.rlb that are already in the Library Directory.

The configuration program will save the Library Directory to the Windows registry at  
HKEY\_LOCAL\_MACHINE\SOFTWARE\ASPEN\DistriView\Settings.

**5. Device driver installation.**

The setup program will start automatically. A status infor message box with will appear after the installation is completed.

**Press Yes if this is a new installation. Press No if DistriView v11 was running on this PC prior to this installation. (Press Yes if you are not sure.).**

**6. For configuration 2a only: Connect a key to the USB port of the workstation.**



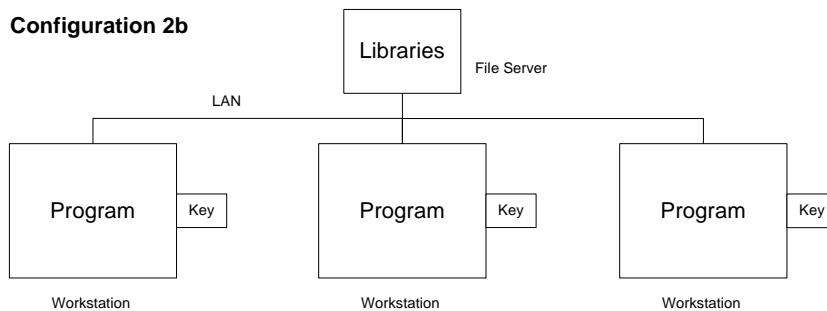
# Section 4

# Config. 2b and 3b

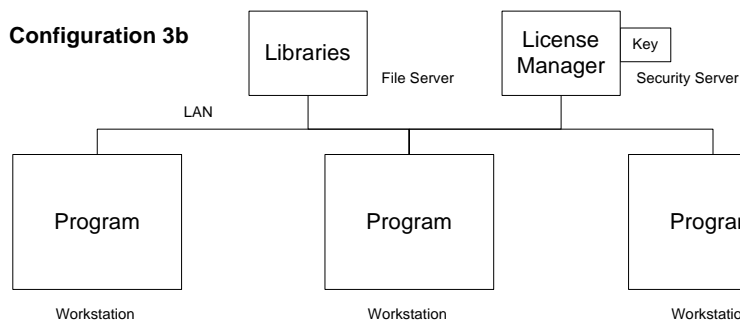
## 4.1 INTRODUCTION

This section will show you how to deploy *DistriView* in the two configurations shown below. Configuration 2b and 3b are similar in that their workstations share the libraries on the file server. The major difference between the two configurations is that 2b utilizes single-user keys, and 3b utilizes a network key. The “Security Server” label for Configuration 3b refers to the “network-key computer” of Section 2.

**Configuration 2b**



**Configuration 3b**



---

## 4.2 SETUP CONFIGURATIONS 2b AND 3b

Here are the steps that you need to do just once:

- a. **Create a Library Directory on the file server for the library files. Make sure (a) users of *DistriView* will have ‘read’ privilege for files in this directory, and (b) you – the installer – have identical mapping of the file server as the users.**

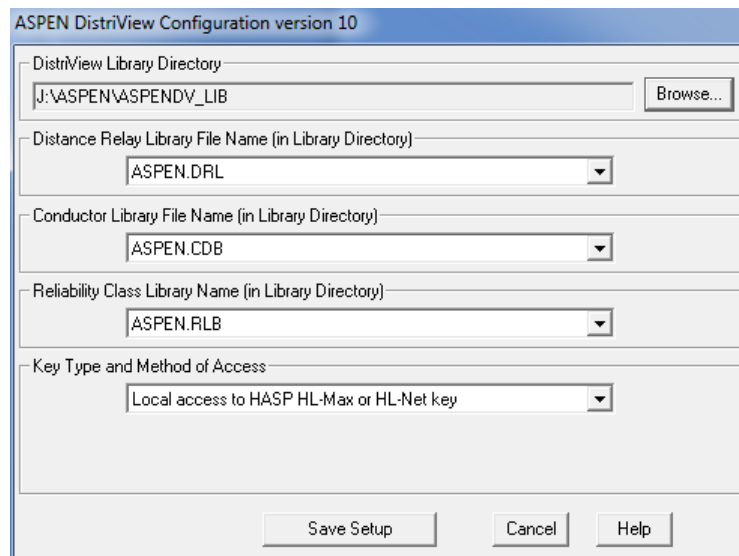
For demonstration purposes, we assume the directory is  
j:\Program Data\ASPEN\ASPENDV\_LIB.

Here are the installation instructions at each workstation:

1. **Insert the program CD into a CD drive.** We assume d: is your CD drive.
2. **Execute the program d:\dv\setup.** Choose the Regular Setup option at the beginning of the setup process. Follow directions in the setup program to install *DistriView* on your local hard drive.
3. ***DistriView* Configuration.**

The setup program will launch the *DistriView Configuration Program* near the end of the installation process.

*Note: The Cancel button is absent if you are installing DistriView v10 for the first time.*



**Press the Browse button and locate the Library Directory of step a.**

### FOR CONFIGURATIONS 2b:

**Select Local access using HASP HL-Max or HL-Net key under the “Key Type and Method of Access” dropdown list box.**

### FOR CONFIGURATIONS 3b:

**Select Local or network access to HASP HL-Net key’s Sentinel Sector under the “Key Type and Method of Access” dropdown list box for a Sentinel-Sector network key.**

**Select Network access to HASP HL-Netkey under the “Key Type and Method of Access” dropdown list box for an legacy network key.**



**Press Save Setup.**

The configuration program will copy all the overcurrent curve library files (\*.rly), the distance relay library file aspen.drl, the conductor library file aspen.cdb, and the reliability class library file aspen.rlb from the program directory to the Library Directory.

If the Library Directory existed prior to this installation, the configuration program will *not* overwrite any custom .rly files or aspen.drl, aspen.cdb, or aspen.rlb that are already in the Library Directory.

The configuration program will save the Library Directory path to the Windows registry at  
HKEY\_LOCAL\_MACHINE\SOFTWARE\ASPEN\DistriView\Settings.

**4. Device driver installation.**

The setup program will ask you if you want to install the device driver for the key.

**Press Yes if this is a new installation. Press No if v11 was running on this PC prior to this installation. (Press Yes if you are not sure.)**

**5. For configuration 3b only: Connect a key to the USB port of the workstation.**



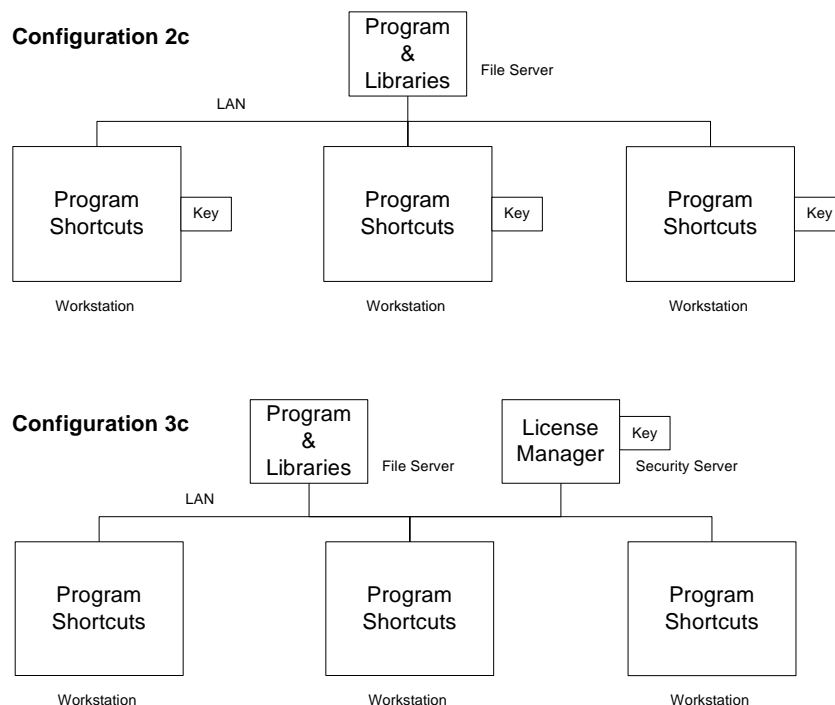
# Section 5

# Config. 2c and 3c

## 5.1 INTRODUCTION

This section will show you how to install the program in two configurations shown below. Configuration 2c and 3c are similar in that the library and program files on the file server are shared by all the workstations on the network. The major difference is that 2c utilizes single-user keys, and 3c utilizes a network key. The “Security Server” label for Configuration 3c refers to the “network-key computer” of Section 2.

The sharing of the program files and library file enforces uniformity and reduces administrative work. We highly recommend these two configurations to organizations with large number of *DistriView* users.



There are two parts to the setup procedure: (1) The setup of program files and library files at the file server, and (2) the setup of program shortcuts at each of the workstations.

---

## 5.2 FILE SERVER SETUP

The setup program can be run on any computer on the network by someone who has sufficient privilege to create directories on the files server and copy files there. There is no driver installation at the file server, and there is no need to reboot. Also, nothing is stored at the file server's Windows registry.

Here are the instructions on installing the program files and the library files on the file server:

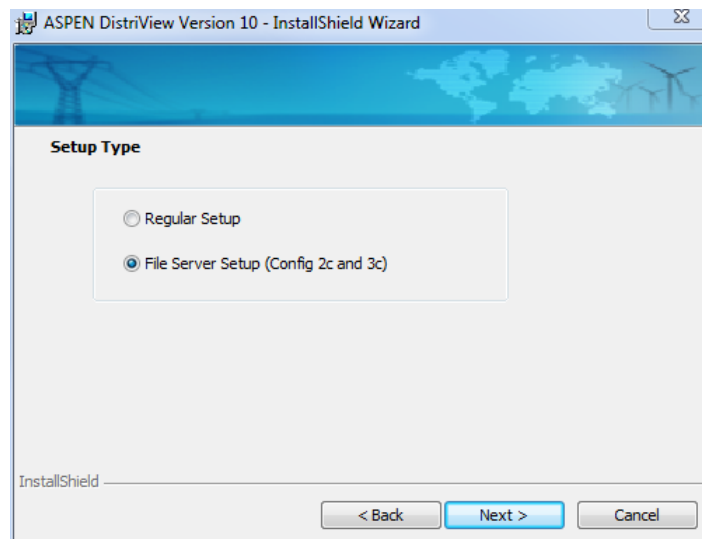
1. **Create a directory on the filer server for the program files. Make sure (a) users of *DistriView* will have read privilege for files in this directory, and (b) you – the installer – have identical mapping of the file server as the users.**

For demonstration purposes, we assume the program directory is  
j:\Temp\DV\_v10.

2. **Create a separate directory on the filer server for the library files. Make sure users of *DistriView* will have read privilege for files in this directory.**

For demonstration purposes, we assume the Library Directory is  
j:\Program Data\ASPEN\ASPENDV\_LIB.

3. **At any computer on the network, insert the program CD into a CD drive. We assume d: is your CD drive.**
4. **Execute the program d:\dv\setup. Choose the File Server Setup option at the beginning of the setup process.**

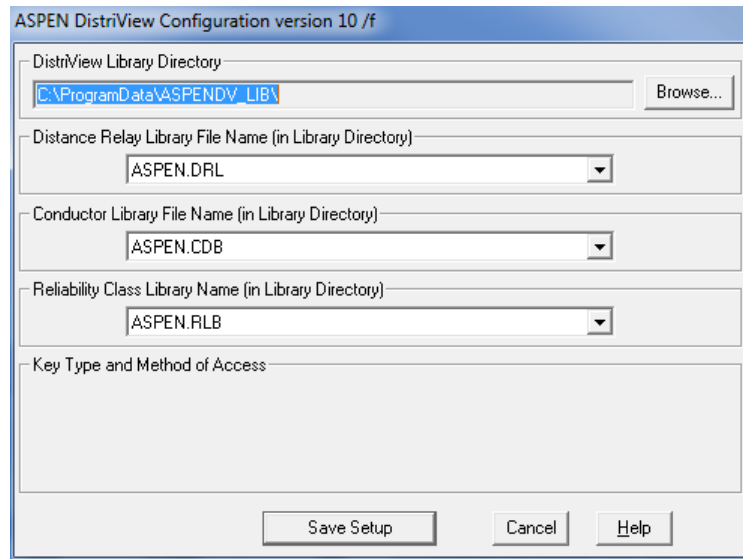


**Follow directions in the setup program. Make sure the program files are installed at the directory you created in step 1.**

5. ***DistriView* Configuration.**

The setup program will launch the *DistriView Configuration Program* near the end of the installation process.

*Note: The Browse button is dimmed, and the Key Type and Method of Access drop-down list is hidden.*



**Press the Browse button and locate the Library Directory of step 2.**

**Press Save Setup.**

The configuration program will copy all the overcurrent curve library files (\*.rly), the distance relay library file aspen.drl, the conductor library file aspen.drl, and the reliability class library file aspen.rlb from the program directory to the Library Directory.

If the Library Directory existed prior to this installation, the configuration program will *not* overwrite any custom .rly files or any .dlr, .cdb, or .rlb that are already in the Library Directory.

The Configuration Program will create a file cfgdv.ini, which contains the Library Directory path, in the program directory.

---

## 5.3 SETUP SHORTCUTS AT WORKSTATIONS

The Workstation Setup needs to be done at each workstation.

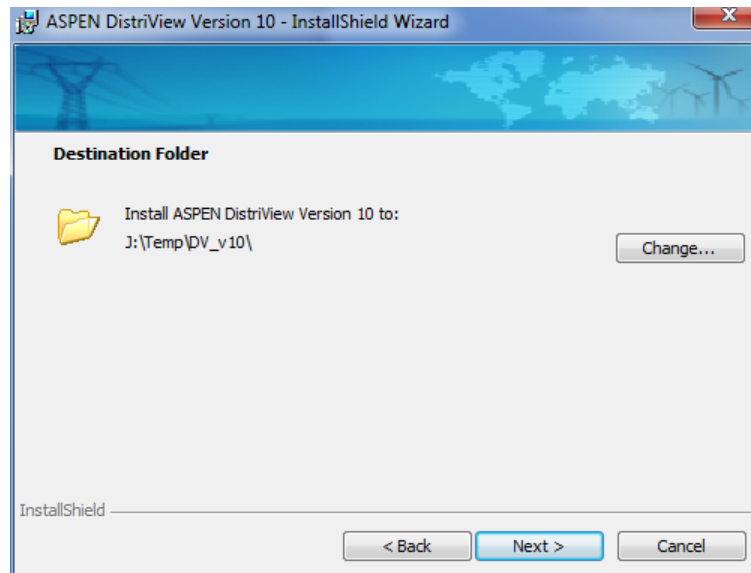
1. **IMPORTANT: For configuration 2c: Do NOT plug in the key until you have completed the steps below.**
2. **At a workstation, insert the program CD into a drive. We assume it is d:**
3. **Execute the Workstation Setup Program d:\DV\wksetup**

**The setup program will then ask you for the Program Folder Location.**

This is the directory on the file server (Section 5.2, Step 1) where you have installed the *DistriView* software.

**Press Browse to select the program directory.**

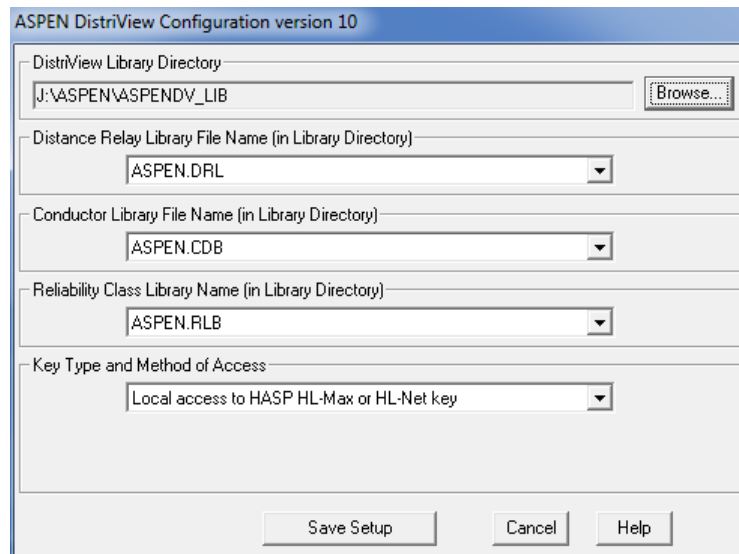
You should see this screen after you have selected the program directory.



**Press Next.** Follow directions from the installation wizard.

#### 4. *DistriView* Configuration.

The setup program will launch the *DistriView Configuration Program* near the end of the installation process. The setup program will use information within the `cfgdv.ini` file (left by the File Server Setup) to automatically fill in the Library Directory path and the name of the distance-relay library file, the conductor library file, and the reliability class library file. The Browse button is disabled.



#### **FOR CONFIGURATIONS 2c:**

**Select Local access using HASP HL-Max or HL-Net Key under the “Key Type and Method of Access” dropdown list box.**

#### **FOR CONFIGURATIONS 3c:**

**Select Local or network access to HASP HL-Net key’s Sentinel Sector under the “Key Type and Method of Access” dropdown list box for a Sentinel-Sector network key.**

**Select Network access using HL-Net Key under the “Key Type and Method of Access” dropdown list box for an legacy network key.**

**Press Save Setup.**

**5. Device driver installation.**

The setup program will ask you if you want to install the device driver for the key.

**Press Yes if this is a new installation. Press No if v14 was running on this PC prior to this installation. (Press Yes if you are not sure.)**

**6. Configuration 2c only: Connect a key to the USB port of the workstation.**





# Section 6                      Program Uninstall

---

## 6.1 UNINSTALL CONFIGS 2a, 2b, 3a AND 3b

The *DistriView* software at each workstation can be uninstalled using the Add/Remove Program utility in the Windows Control Panel. The program to remove is “ASPEN DistriView version 11.”

The uninstall logic will not remove the Library Directory or the files that are within it. You must remove them manually.

Also, at each workstation, the registry entries under  
HKEY\_LOCAL\_MACHINE\SOFTWARE\ASPEN\DistriView and  
HKEY\_CURRENTUSER\SOFTWARE\ASPEN\DistriView will remain after the uninstall. You will have to run regedit.exe and remove them manually.

---

## 6.2 UNINSTALL CONFIGS 2c AND 3c

At each workstation, the shortcuts to the *DistriView* software can be uninstalled using the Add/Remove Program utility in the Windows Control Panel. The program to remove is “ASPEN DistriView v10 Workstation.”

At the computer where you performed the “file server setup”, you can remove the program files on the file server by using the Add/Remove Program utility in the Windows Control Panel. The program to remove is “ASPEN DistriView version 11”.

The uninstall logic will not remove the Library Directory or the files that are within it. You must remove them manually.

Also, at each workstation, the registry entries under  
HKEY\_LOCAL\_MACHINE\SOFTWARE\ASPEN\DistriView and  
HKEY\_CURRENTUSER\SOFTWARE\ASPEN\DistriView will remain after the uninstall. You will have to run regedit.exe and remove them manually.

---

## 6.3 STOPPING THE LICENSE MANAGER

This step is necessary only for uninstalling configurations 3a, 3b and 3c, **under the Legacy network-key setup**.

The License Manager is a service running on the security server. Please be aware that the License Manager may be shared by other programs that utilize the HL-Net keys. If so, you should leave the License Manager alone.

To disable the License Manager, stop the service “Hasp Loader” with the Administrative Tools in the Control Panel. Remove the HL-Net key for *DistriView* after the service has stopped.